

GOODRICH SOLUTIONS

FABRIC

F31 | SHIELD LEATHER



Goodrich Global
SINCE 1983

SILICONE FABRIC



*We've got you
Covered!*

GOODFABRIC

2021 - 2023.12

COMMERCIAL | HOSPITALITY | RESIDENTIAL

DO YOUR BEST TO STAIN IT!

How to test Shield Leather

- Permanent Marker and Ball point pen (Water based ink only): Use an eraser and see the ink disappear!

Disclaimer: Certain pen ink, especially luminous ink, oil based ink may leave a stain.

- Any liquid stains: Pour Oil, Curry, Betadine, Wine etc, use a dry cloth and wipe it clean! Clean off any excess with a wet cloth!
- Other type of stains: Lipstick, chalk etc, wipe off the stain with a dry tissue and then use a wet cloth to wipe it clean!
- To disinfect: Just use Clorox(bleach) to clean and dry with a dry cloth.

BETADINE



RED WINE



WATER BASED PERMANENT MARKER



BEFORE

AFTER

Shield Leather Maintenance Care

- Cleanable with bleach.
- For stubborn stains, alcohol-based cleaners can be used to remove the stains.
- Cleaning code W/S: Water-based cleaning agent or solvent.

Depending on the stain, you can use a dry-cleaning solvent, the foam of a mild detergent, or upholstery shampoo.

For best results, all stains should be removed as soon as possible in accordance to our recommended maintenance care instructions.

? WHY CHOOSE SHIELD LEATHER

100% Pure Silicone Coated Faux Leather

- Innovative combination of superior leather textures and silicone technology.
- Versatile and suitable for various applications which require heavy duty protection and durability.

Allergen-free

- Chemical-free.
- Skin friendly and allergen free.
- Anti-bacterial, anti-microbial, anti-mildew ASTM G21.

Easy to clean

- Superior stain resistance to ink, coffee, wine, lipstick and betadine.
- Water-based cleaning solvents or mild detergent are suitable for quick cleaning.
- Bleach cleanable.

Eco-friendly

- Free of PVC, phthalates, solvent, DMF heavy metals or to other harmful materials.
- Complies with California 01350 VOC emissions standards and certified 'Gold' for indoor air quality by SCS Global Services.

Highly Durable

- Inherent Flame Resistance according to the National Protection Association and International Maritime.
- High abrasion resistance as tested by US (Wyzenbeek 200,000 double rubs) and British (Martindale 130,000 rubs) standards.
- Scratch Resistant.
- Colour Fastness.



Imitation is a form of flattery but can never perform as well as the original!

- To make cheap alternatives, these are usually only PU or PVC vinyl coated with small amount of Silicone as top coat.
- Such coated PU or PVC silicone vinyl does not remove the problem of PU (Peeling due to humidity and heat) and PVC (Cracking).
- The silicone coating acts only as a coating and the advantageous properties of Silicone will fade over time.

Use only Shield Leather for an assured durability!

TECHNICAL SPECIFICATIONS

Colourfastness

- Lightfastness: AATCC16.3, 200 hours, Grade 5
- Crocking: AATCC8, Class 5 - Wet & Dry

Dimensions

- Width: 54 inches
- Thickness: 0.9mm - 1.1mm

Material Composition

- Surface: 100% Pure Silicone
- Backing: 100% Polyester

Inherent Flame Resistance

- CA TB117-2003
- BS5852 #0, 1, 5 (crib)
- UFAC Class I
- FMVSS #302
- DIN EN 1021 Part I & II
- IMO A.652(16) Part 8
- NFPA 260 Class I

Physical Performance

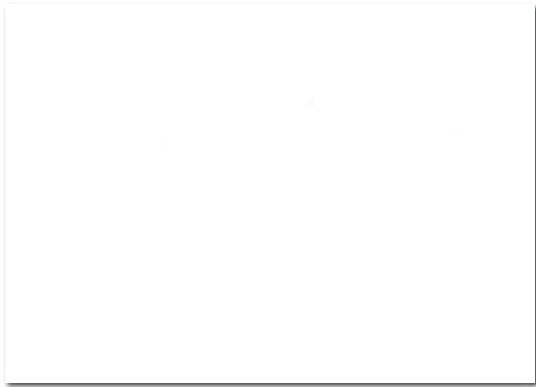
- Wyzenbeek: ASTM D4157-13 – 200,000 Double Rubs
- Martindale: EN ISO 12947-2 – 130,000 Rubs
- UV Stability: ASTM D4329-05 – 300 hours or 1000 hours
- Hydrolysis Resistance: ASTM D3690-02 – 10+ weeks
- Cold Crack Resistance: 5# Roller, CFFA-06

Stain Resistance

- Ink: CFFA-141, Class 5
- Permanent Marker: CFFA-141, Class 5
- Coffee: CFFA-141, Class 5
- Blood/Urine/Betadine: CFFA-141, Class 5
- Mustard/Wine: CFFA-141, Class 5
- Lipstick: CFFA-141, Class 5

5 years limited warranty

PERFECT



SL1001 WHITE



SL1002 KHAKI



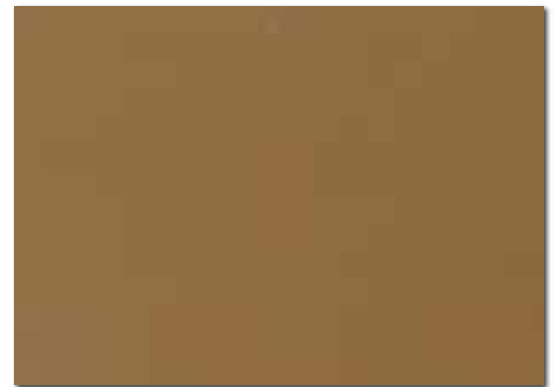
SL1003 SANDSTONE



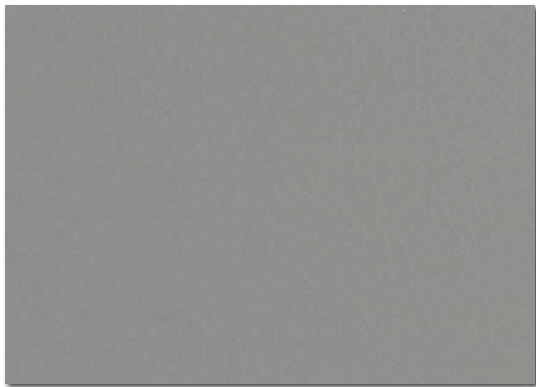
SL1004 SALT



SL1005 PEANUT



SL1006 CARAMEL



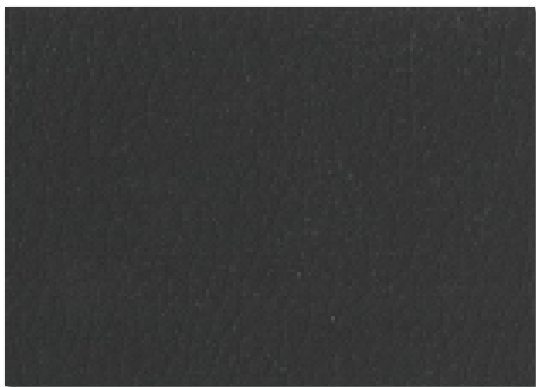
SL1007 SMOKE



SL1008 CEDAR



SL1009 AMBER



SL1010 ONYX

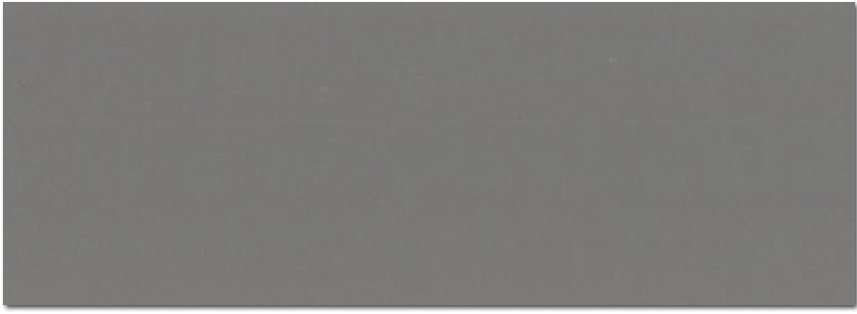


SL1011 DENIM

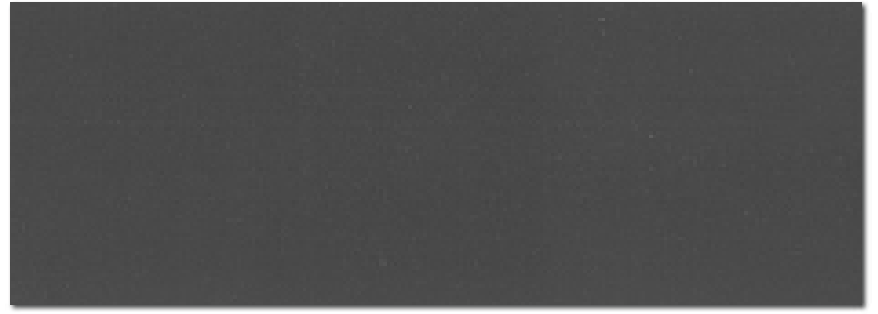


SL1012 RUBY

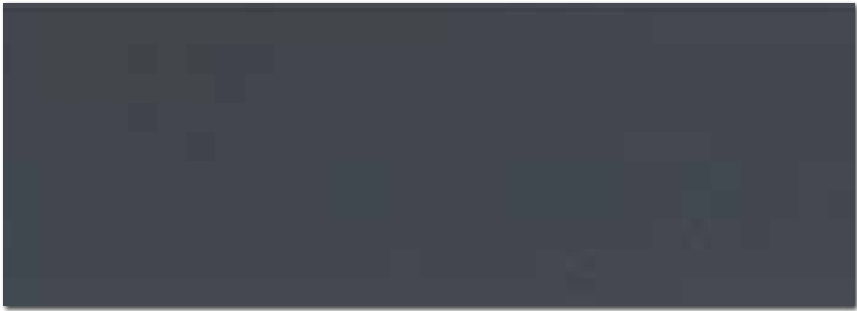
POLISHED



SL1013 MAGNET



SL1014 ANCHOR



SL1015 JAZZ

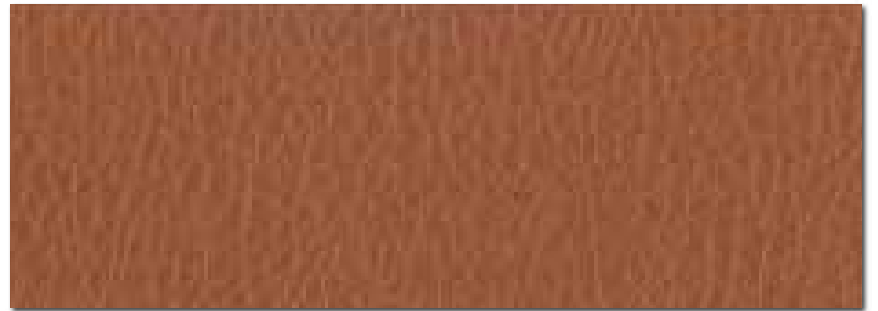


SL1016 CHOCOLATE

POETRY



SL1017 EARTH



SL1018 AUTUMN



SL1019 SYRUP



SL1020 CHESTNUT

Color customs can be easily done with a low MOQ. Prices differ with required custom quantities. Please check with your Goodrich account servicing sales personnel for more details.

GOODRICH SOLUTIONS

FABRIC

F31 | SHIELD LEATHER

WITH GOODRICH,

Your habitat becomes

A gallery of

Your **self-expressions;**

A canvas for

Your **creativity;**









A space for

Your **soul;**

A showcase of

Your **taste for life;**

Stay Connected - www.goodrichglobal.com | info@goodrichglobal.com

 /Goodrich.Global.Singapore  /goodrich_global  /GoodrichGlobal  /GoodrichChina
 /GoodrichGlobal  /goodrichglobal  /GoodrichHQ  /Goodrich_Global

SINGAPORE [HQ] | CHINA | HONG KONG (CHINA) | INDIA | INDONESIA | MALAYSIA | MYANMAR | PHILIPPINES | THAILAND | UNITED ARAB EMIRATES | VIETNAM

Copyright © 2021 Goodrich Global. All rights reserved.