

GOODRICH SOLUTIONS  
**WALLCOVERING**  
310 | ETEREA



Goodrich Global  
SINCE 1983

**VINYL CONTRACT WALLCOVERING**

MYWALL



*We've got you  
Covered!*

**MYWALL**  
2021 – 2024.12

COMMERCIAL | HOSPITALITY | RESIDENTIAL





MATERIA



# MYWALL ETEREA LOW VOC

Vinyl Contract Wallcovering

## PHYSICAL PROPERTIES

Weight	420g/m <sup>2</sup>
Roll Size	70cm x 10mtrs
Backing	Non Woven

## FIRE SAFETY

- EURO CLASS – Bs2d0
- IMO - International Maritime Organization

## QUALITY ASSURANCE

- IGI Quality Mark Certification

## ENVIRONMENT AND HEALTH

- FSC Certified
- CE Compliant
- Low VOC (A+)

## CLEANING/MAINTENANCE

**MYWALL ETEREA** if soiled, wash with mild detergent, rinse with clean water and sponge it dry. However, an accumulation of water at skirting level should be avoided, as this may cause the wallpaper to delaminate from the surface.

## ANTI-MICROBIAL FEATURES

**MYWALL ETEREA** has a high degree of microbial resistance.

## BATCHING

Since slight variation in shading may occur time to time, it is important that the roll carrying the same batch number be used in any one area.

## ORIGIN

ITALY

WINGS







**Andrea Boschetti**  
CEO Metrogramma Milano  
Art Director

## Metrogramma Milano

Metrogramma is a well-known international architectural firm whose activities range from urban planning to design in broader sense. The Studio was born within the IUAV of Venice in 1996 in the form of a work and research group.

Today Metrogramma, in addition to Andrea Boschetti, who continues to be the reference architect of the firm as CEO and artistic director, is composed by enthusiastic partners who lead flexible teams of young and talented architects. They have widened their experience in interior design thanks to the recent professional partnership with the London contract division of LLEngineering, a leading company in luxury living projects.

Over the years they have teamed up with some of the most famous brands such as Fendi Home, Bentley Home, Bugatti Home and many others in several different ventures. In September 2019 Metrogramma, together with Stefano Boeri Architetti and the Rotterdam-based Studio Inside Outside, won the international competition “Quadrante Val Polcevera - the red circle and the Bridge Park” for the reconstruction of the area of the city of Genoa devastated by the collapse of the Morandi Bridge on 14 August 2018.



**Materia**



**Tattoo**



**Impressioni**



**Chiara Caberlon / Ermanno Caroppi**  
CEO Caberlon Caroppi Italian Touch Architects

## Caberlon Caroppi Italian Touch Architects

The firm was born in Milan in 2004 and in 2008 it founded the headquarters in Fermo, with the aim of expanding over the country to get in touch with the various souls of Italian design and Made in Italy.

The Studio nourishes its eclectic and versatile identity by always facing new challenges and places at the center of its objectives the creation of innovative tailor-made concepts dedicated to all hospitality categories: from large business hotels to historic venues, from luxury resorts to cozy boutique hotels.

The deep knowledge of the context where each project is immersed mesmerizes and contaminates the architectural work with local traditions, to fulfil at best the needs of the client. All this to create actual experiences and not mere places of passage.

A painstaking attention to detail combines with the professionalism of the design: atmosphere, light, materials and colors are carefully studied. With a perfect synthesis of dynamism, expertise and tailoring, since its foundation Caberlon Caroppi has been bringing Italian excellence to the world.



**Inked**



**Frames**



**Alfonso Femia**  
CEO AF517 Alfonso Femia Atelier(s)

## AF517 Alfonso Femia Atelier(s)

Alfonso Femia was born in Taurianova, Reggio Calabria, on 7th December 1966. He graduated from the University of Genoa - Faculty of Architecture in 1992. A member of the Order of Architects of Genoa since 1994, of Île-de-France since 1995 and of Swiss Architects since 2014, Alfonso Femia taught Architectural Design at the Kent State University of Florence, and at the Architecture Schools of Ferrara and Genoa Universities. Founder of the firm 5 + 1 in 1995, he created 5 + 1AA in 2005 and 5 + 1AA Parigi in 2007.

He won several worldwide competitions and his works have appeared in many international magazines. In 2015 he was the creator and founder of the 500x100 video platform, centered on the theme of the city. In 2017 he edited the monographic issue of IQD “Invisible Mediterraneans”, researching and reaffirming the centrality of the Mediterranean in contemporary thought. His research on matter led him to collaborate with important design companies including Castaldi Lighting, iGuzzini, PoltronaFrau, Casalgrande, Padana, Martinelli Luce, Xilo1930, Staygreen. A lover of city-territories, he defines Time as the main subject of design and architecture. Man is time.



**Lucifer**



**Wings**

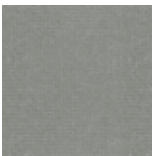


**Aldo Cibic**  
CEO Cibic Workshop

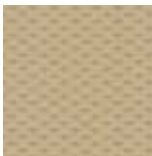
## Cibic Workshop

Aldo Cibic starts his business in Milan in the late Seventies. He works now in many parts of the world: his is a composite reality that by choice and vocation deals with projects of different nature ranging from building to interiors, to design and multimedia. The Studio is composed of a group of architects, interior designers, graphic designers, industrial designers and a dense network of external collaborators with different cultural and professional backgrounds.

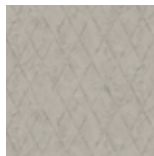
The result is an intense exchange of stimuli and energies, leading to concrete and innovative projects. He also teaches at the Politecnico di Milano and at the University Institute of Architecture in Venice. He is visiting professor at Tongji University in Shanghai. In 2004 he was invited by Kurt W. Foster to present the “Microrealities” project at the IX Venice Biennale entitled Metamorph. In 2010 his project “Rethinking Happiness” is selected by director Kazuyo Sejima for the XII Venice Biennale entitled “People Meet in Architecture”.



**Dots**



**Clouds**



**Arlecchino**





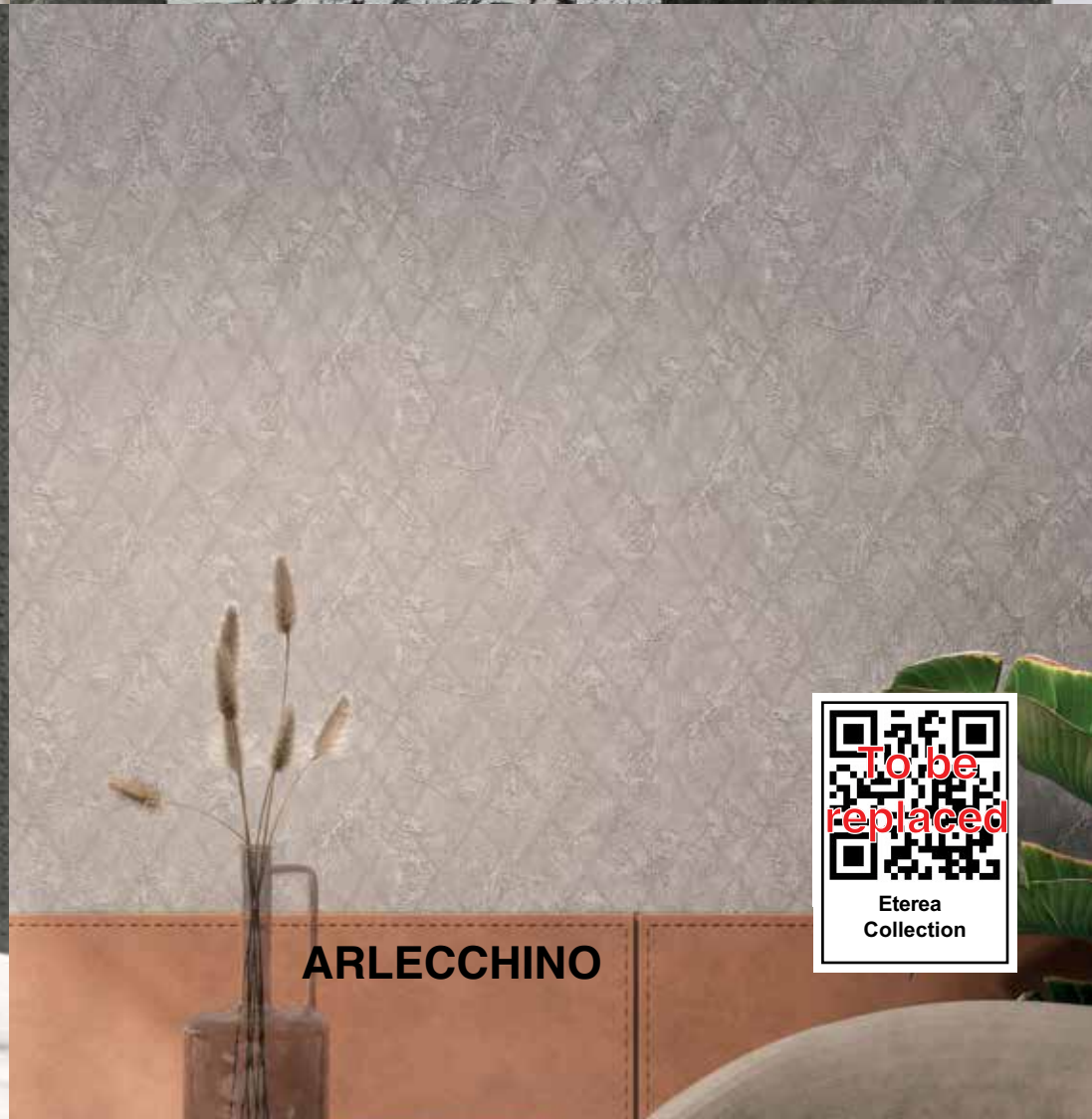
**INKED**



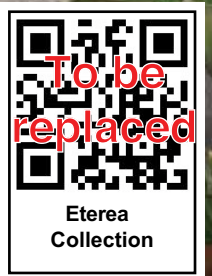
**LUCIFER**



**DOTS**



**ARLECCHINO**





**MYWALL  
ETEREA**

**Z42601**  
MATERIA

<b>ROLL SIZE:</b>	70cm X 10m
<b>COMPOSITION:</b>	Vinyl
<b>BACKING:</b>	Non-Woven
<b>WEIGHT:</b>	420g/m <sup>2</sup>
<b>PATTERN MATCH:</b>	Straight Match



**MYWALL  
ETEREA**

**Z42602**  
MATERIA

<b>ROLL SIZE:</b>	70cm X 10m
<b>COMPOSITION:</b>	Vinyl
<b>BACKING:</b>	Non-Woven
<b>WEIGHT:</b>	420g/m <sup>2</sup>
<b>PATTERN MATCH:</b>	Straight Match





**MYWALL  
ETEREA**

**Z42603**  
MATERIA

<b>ROLL SIZE:</b>	70cm X 10m
<b>COMPOSITION:</b>	Vinyl
<b>BACKING:</b>	Non-Woven
<b>WEIGHT:</b>	420g/m <sup>2</sup>
<b>PATTERN MATCH:</b>	Straight Match



**MYWALL  
ETEREA**

**Z42604**  
MATERIA

<b>ROLL SIZE:</b>	70cm X 10m
<b>COMPOSITION:</b>	Vinyl
<b>BACKING:</b>	Non-Woven
<b>WEIGHT:</b>	420g/m <sup>2</sup>
<b>PATTERN MATCH:</b>	Straight Match



**MYWALL  
ETEREA**

# **Z42605**

**MATERIA**

<b>ROLL SIZE:</b>	70cm X 10m
<b>COMPOSITION:</b>	Vinyl
<b>BACKING:</b>	Non-Woven
<b>WEIGHT:</b>	420g/m <sup>2</sup>
<b>PATTERN MATCH:</b>	Straight Match



**MYWALL  
ETEREA**

# **Z42606**

**TATTOO**

<b>ROLL SIZE:</b>	70cm X 10m
<b>COMPOSITION:</b>	Vinyl
<b>BACKING:</b>	Non-Woven
<b>WEIGHT:</b>	420g/m <sup>2</sup>
<b>PATTERN MATCH:</b>	Straight Match



**MYWALL  
ETEREA**

# **Z42607**

**TATTOO**

<b>ROLL SIZE:</b>	70cm X 10m
<b>COMPOSITION:</b>	Vinyl
<b>BACKING:</b>	Non-Woven
<b>WEIGHT:</b>	420g/m <sup>2</sup>
<b>PATTERN MATCH:</b>	Straight Match





**MYWALL  
ETEREA**

**Z42608**  
**TATTOO**

<b>ROLL SIZE:</b>	70cm X 10m
<b>COMPOSITION:</b>	Vinyl
<b>BACKING:</b>	Non-Woven
<b>WEIGHT:</b>	420g/m <sup>2</sup>
<b>PATTERN MATCH:</b>	Straight Match





**MYWALL  
ETEREA**

**Z42609**  
TATTOO

<b>ROLL SIZE:</b>	70cm X 10m
<b>COMPOSITION:</b>	Vinyl
<b>BACKING:</b>	Non-Woven
<b>WEIGHT:</b>	420g/m <sup>2</sup>
<b>PATTERN MATCH:</b>	Straight Match





**MYWALL  
ETEREA**

**Z42610**  
TATTOO

<b>ROLL SIZE:</b>	70cm X 10m
<b>COMPOSITION:</b>	Vinyl
<b>BACKING:</b>	Non-Woven
<b>WEIGHT:</b>	420g/m <sup>2</sup>
<b>PATTERN MATCH:</b>	Straight Match



**MYWALL  
ETEREA**

# **Z42611**

**IMPRESSIONI**

<b>ROLL SIZE:</b>	70cm X 10m
<b>COMPOSITION:</b>	Vinyl
<b>BACKING:</b>	Non-Woven
<b>WEIGHT:</b>	420g/m <sup>2</sup>
<b>PATTERN MATCH:</b>	Random Match





**MYWALL  
ETEREA**

**Z42612**  
IMPRESSIONI

<b>ROLL SIZE:</b>	70cm X 10m
<b>COMPOSITION:</b>	Vinyl
<b>BACKING:</b>	Non-Woven
<b>WEIGHT:</b>	420g/m <sup>2</sup>
<b>PATTERN MATCH:</b>	Random Match



**MYWALL  
ETEREA**

# **Z42613**

**IMPRESSIONI**

<b>ROLL SIZE:</b>	70cm X 10m
<b>COMPOSITION:</b>	Vinyl
<b>BACKING:</b>	Non-Woven
<b>WEIGHT:</b>	420g/m <sup>2</sup>
<b>PATTERN MATCH:</b>	Random Match



**MYWALL  
ETEREA**

# **Z42614**

**IMPRESSIONI**

<b>ROLL SIZE:</b>	70cm X 10m
<b>COMPOSITION:</b>	Vinyl
<b>BACKING:</b>	Non-Woven
<b>WEIGHT:</b>	420g/m <sup>2</sup>
<b>PATTERN MATCH:</b>	Random Match



**MYWALL  
ETEREA**

# **Z42615**

**IMPRESSIONI**

<b>ROLL SIZE:</b>	70cm X 10m
<b>COMPOSITION:</b>	Vinyl
<b>BACKING:</b>	Non-Woven
<b>WEIGHT:</b>	420g/m <sup>2</sup>
<b>PATTERN MATCH:</b>	Random Match





**MYWALL  
ETEREA**

**Z42616**  
INKED

<b>ROLL SIZE:</b>	70cm X 10m
<b>COMPOSITION:</b>	Vinyl
<b>BACKING:</b>	Non-Woven
<b>WEIGHT:</b>	420g/m <sup>2</sup>
<b>PATTERN MATCH:</b>	Straight Match





**MYWALL  
ETEREA**

**Z42617**  
INKED

<b>ROLL SIZE:</b>	70cm X 10m
<b>COMPOSITION:</b>	Vinyl
<b>BACKING:</b>	Non-Woven
<b>WEIGHT:</b>	420g/m <sup>2</sup>
<b>PATTERN MATCH:</b>	Straight Match



**MYWALL  
ETEREA**

**Z42618**  
**INKED**

<b>ROLL SIZE:</b>	70cm X 10m
<b>COMPOSITION:</b>	Vinyl
<b>BACKING:</b>	Non-Woven
<b>WEIGHT:</b>	420g/m <sup>2</sup>
<b>PATTERN MATCH:</b>	Straight Match





**MYWALL  
ETEREA**

**Z42619**  
INKED

<b>ROLL SIZE:</b>	70cm X 10m
<b>COMPOSITION:</b>	Vinyl
<b>BACKING:</b>	Non-Woven
<b>WEIGHT:</b>	420g/m <sup>2</sup>
<b>PATTERN MATCH:</b>	Straight Match





**MYWALL  
ETEREA**

**Z42620**  
INKED

<b>ROLL SIZE:</b>	70cm X 10m
<b>COMPOSITION:</b>	Vinyl
<b>BACKING:</b>	Non-Woven
<b>WEIGHT:</b>	420g/m <sup>2</sup>
<b>PATTERN MATCH:</b>	Straight Match



**MYWALL  
ETEREA**

# **Z42621**

**FRAMES**

<b>ROLL SIZE:</b>	70cm X 10m
<b>COMPOSITION:</b>	Vinyl
<b>BACKING:</b>	Non-Woven
<b>WEIGHT:</b>	420g/m <sup>2</sup>
<b>PATTERN MATCH:</b>	Random Match



**MYWALL  
ETEREA**

**Z42622**  
FRAMES

<b>ROLL SIZE:</b>	70cm X 10m
<b>COMPOSITION:</b>	Vinyl
<b>BACKING:</b>	Non-Woven
<b>WEIGHT:</b>	420g/m <sup>2</sup>
<b>PATTERN MATCH:</b>	Random Match



**MYWALL  
ETEREA**

# **Z42623**

**FRAMES**

<b>ROLL SIZE:</b>	70cm X 10m
<b>COMPOSITION:</b>	Vinyl
<b>BACKING:</b>	Non-Woven
<b>WEIGHT:</b>	420g/m <sup>2</sup>
<b>PATTERN MATCH:</b>	Random Match



**MYWALL  
ETEREA**

**Z42624**  
FRAMES

<b>ROLL SIZE:</b>	70cm X 10m
<b>COMPOSITION:</b>	Vinyl
<b>BACKING:</b>	Non-Woven
<b>WEIGHT:</b>	420g/m <sup>2</sup>
<b>PATTERN MATCH:</b>	Random Match



**MYWALL  
ETEREA**

**Z42625**  
FRAMES

<b>ROLL SIZE:</b>	70cm X 10m
<b>COMPOSITION:</b>	Vinyl
<b>BACKING:</b>	Non-Woven
<b>WEIGHT:</b>	420g/m <sup>2</sup>
<b>PATTERN MATCH:</b>	Random Match



**MYWALL  
ETEREA**

**Z42626**  
LUCIFER

<b>ROLL SIZE:</b>	70cm X 10m
<b>COMPOSITION:</b>	Vinyl
<b>BACKING:</b>	Non-Woven
<b>WEIGHT:</b>	420g/m <sup>2</sup>
<b>PATTERN MATCH:</b>	Random Match





**MYWALL  
ETEREA**

**Z42627**  
LUCIFER

<b>ROLL SIZE:</b>	70cm X 10m
<b>COMPOSITION:</b>	Vinyl
<b>BACKING:</b>	Non-Woven
<b>WEIGHT:</b>	420g/m <sup>2</sup>
<b>PATTERN MATCH:</b>	Random Match





**MYWALL  
ETEREA**

**Z42628**  
LUCIFER

<b>ROLL SIZE:</b>	70cm X 10m
<b>COMPOSITION:</b>	Vinyl
<b>BACKING:</b>	Non-Woven
<b>WEIGHT:</b>	420g/m <sup>2</sup>
<b>PATTERN MATCH:</b>	Random Match





**MYWALL  
ETEREA**

**Z42629**  
LUCIFER

<b>ROLL SIZE:</b>	70cm X 10m
<b>COMPOSITION:</b>	Vinyl
<b>BACKING:</b>	Non-Woven
<b>WEIGHT:</b>	420g/m <sup>2</sup>
<b>PATTERN MATCH:</b>	Random Match





**MYWALL  
ETEREA**

**Z42630**  
LUCIFER

<b>ROLL SIZE:</b>	70cm X 10m
<b>COMPOSITION:</b>	Vinyl
<b>BACKING:</b>	Non-Woven
<b>WEIGHT:</b>	420g/m <sup>2</sup>
<b>PATTERN MATCH:</b>	Random Match



**MYWALL  
ETEREA**

**Z42631**  
WINGS

<b>ROLL SIZE:</b>	70cm X 10m
<b>COMPOSITION:</b>	Vinyl
<b>BACKING:</b>	Non-Woven
<b>WEIGHT:</b>	420g/m <sup>2</sup>
<b>PATTERN MATCH:</b>	Random Match



**MYWALL  
ETEREA**

**Z42632**  
WINGS

<b>ROLL SIZE:</b>	70cm X 10m
<b>COMPOSITION:</b>	Vinyl
<b>BACKING:</b>	Non-Woven
<b>WEIGHT:</b>	420g/m <sup>2</sup>
<b>PATTERN MATCH:</b>	Random Match



**MYWALL  
ETEREA**

**Z42633**  
WINGS

<b>ROLL SIZE:</b>	70cm X 10m
<b>COMPOSITION:</b>	Vinyl
<b>BACKING:</b>	Non-Woven
<b>WEIGHT:</b>	420g/m <sup>2</sup>
<b>PATTERN MATCH:</b>	Random Match



**MYWALL  
ETEREA**

# Z42634

WINGS

<b>ROLL SIZE:</b>	70cm X 10m
<b>COMPOSITION:</b>	Vinyl
<b>BACKING:</b>	Non-Woven
<b>WEIGHT:</b>	420g/m <sup>2</sup>
<b>PATTERN MATCH:</b>	Random Match



**MYWALL  
ETEREA**

# **Z42635**

**WINGS**

<b>ROLL SIZE:</b>	70cm X 10m
<b>COMPOSITION:</b>	Vinyl
<b>BACKING:</b>	Non-Woven
<b>WEIGHT:</b>	420g/m <sup>2</sup>
<b>PATTERN MATCH:</b>	Random Match



**MYWALL  
ETEREA**

**Z42636**  
DOTS

<b>ROLL SIZE:</b>	70cm X 10m
<b>COMPOSITION:</b>	Vinyl
<b>BACKING:</b>	Non-Woven
<b>WEIGHT:</b>	420g/m <sup>2</sup>
<b>PATTERN MATCH:</b>	Random Match



**MYWALL  
ETEREA**

**Z42637**  
DOTS

<b>ROLL SIZE:</b>	70cm X 10m
<b>COMPOSITION:</b>	Vinyl
<b>BACKING:</b>	Non-Woven
<b>WEIGHT:</b>	420g/m <sup>2</sup>
<b>PATTERN MATCH:</b>	Random Match



**MYWALL  
ETEREA**

**Z42638**  
DOTS

<b>ROLL SIZE:</b>	70cm X 10m
<b>COMPOSITION:</b>	Vinyl
<b>BACKING:</b>	Non-Woven
<b>WEIGHT:</b>	420g/m <sup>2</sup>
<b>PATTERN MATCH:</b>	Random Match



**MYWALL  
ETEREA**

**Z42639**  
DOTS

<b>ROLL SIZE:</b>	70cm X 10m
<b>COMPOSITION:</b>	Vinyl
<b>BACKING:</b>	Non-Woven
<b>WEIGHT:</b>	420g/m <sup>2</sup>
<b>PATTERN MATCH:</b>	Random Match



**MYWALL  
ETEREA**

**Z42640**  
DOTS

<b>ROLL SIZE:</b>	70cm X 10m
<b>COMPOSITION:</b>	Vinyl
<b>BACKING:</b>	Non-Woven
<b>WEIGHT:</b>	420g/m <sup>2</sup>
<b>PATTERN MATCH:</b>	Random Match



**MYWALL  
ETEREA**

# **Z42641**

**CLOUDS**

<b>ROLL SIZE:</b>	70cm X 10m
<b>COMPOSITION:</b>	Vinyl
<b>BACKING:</b>	Non-Woven
<b>WEIGHT:</b>	420g/m <sup>2</sup>
<b>PATTERN MATCH:</b>	Straight Match



**MYWALL  
ETEREA**

# **Z42642**

**CLOUDS**

<b>ROLL SIZE:</b>	70cm X 10m
<b>COMPOSITION:</b>	Vinyl
<b>BACKING:</b>	Non-Woven
<b>WEIGHT:</b>	420g/m <sup>2</sup>
<b>PATTERN MATCH:</b>	Straight Match



**MYWALL  
ETEREA**

# **Z42643**

**CLOUDS**

<b>ROLL SIZE:</b>	70cm X 10m
<b>COMPOSITION:</b>	Vinyl
<b>BACKING:</b>	Non-Woven
<b>WEIGHT:</b>	420g/m <sup>2</sup>
<b>PATTERN MATCH:</b>	Straight Match



**MYWALL  
ETEREA**

# **Z42644**

**CLOUDS**

<b>ROLL SIZE:</b>	70cm X 10m
<b>COMPOSITION:</b>	Vinyl
<b>BACKING:</b>	Non-Woven
<b>WEIGHT:</b>	420g/m <sup>2</sup>
<b>PATTERN MATCH:</b>	Straight Match



**MYWALL  
ETEREA**

# **Z42645**

**CLOUDS**

<b>ROLL SIZE:</b>	70cm X 10m
<b>COMPOSITION:</b>	Vinyl
<b>BACKING:</b>	Non-Woven
<b>WEIGHT:</b>	420g/m <sup>2</sup>
<b>PATTERN MATCH:</b>	Straight Match



**MYWALL  
ETEREA**

**Z42646**  
**ARLECCHINO**

<b>ROLL SIZE:</b>	70cm X 10m
<b>COMPOSITION:</b>	Vinyl
<b>BACKING:</b>	Non-Woven
<b>WEIGHT:</b>	420g/m <sup>2</sup>
<b>PATTERN MATCH:</b>	Straight Match



**MYWALL  
ETEREA**

**Z42647**  
**ARLECCHINO**

<b>ROLL SIZE:</b>	70cm X 10m
<b>COMPOSITION:</b>	Vinyl
<b>BACKING:</b>	Non-Woven
<b>WEIGHT:</b>	420g/m <sup>2</sup>
<b>PATTERN MATCH:</b>	Straight Match





**MYWALL  
ETEREA**

**Z42648**  
**ARLECCHINO**

<b>ROLL SIZE:</b>	70cm X 10m
<b>COMPOSITION:</b>	Vinyl
<b>BACKING:</b>	Non-Woven
<b>WEIGHT:</b>	420g/m <sup>2</sup>
<b>PATTERN MATCH:</b>	Straight Match



**MYWALL  
ETEREA**

# **Z42649**

**ARLECCHINO**

<b>ROLL SIZE:</b>	70cm X 10m
<b>COMPOSITION:</b>	Vinyl
<b>BACKING:</b>	Non-Woven
<b>WEIGHT:</b>	420g/m <sup>2</sup>
<b>PATTERN MATCH:</b>	Straight Match





**MYWALL  
ETEREA**

**Z42650**  
**ARLECCHINO**

<b>ROLL SIZE:</b>	70cm X 10m
<b>COMPOSITION:</b>	Vinyl
<b>BACKING:</b>	Non-Woven
<b>WEIGHT:</b>	420g/m <sup>2</sup>
<b>PATTERN MATCH:</b>	Straight Match





CLOUDS



TATTOO



IMPRESSIONI



FRAMES





# MY WALL (INDEX)

## ETEREA

Page	Pattern No	Pattern Name	Weight (g)	Pattern Repeat (cm)		Pattern Match	Backing	Roll Size
				Horizontal	Vertical			
1	Z42601	Materia	420	0	60	Straight Match	Non-Woven	70cm x 10m
2	Z42602	Materia	420	0	60	Straight Match	Non-Woven	70cm x 10m
3	Z42603	Materia	420	0	60	Straight Match	Non-Woven	70cm x 10m
4	Z42604	Materia	420	0	60	Straight Match	Non-Woven	70cm x 10m
5	Z42605	Materia	420	0	60	Straight Match	Non-Woven	70cm x 10m
6	Z42606	Tattoo	420	0	64	Straight Match	Non-Woven	70cm x 10m
7	Z42607	Tattoo	420	0	64	Straight Match	Non-Woven	70cm x 10m
8	Z42608	Tattoo	420	0	64	Straight Match	Non-Woven	70cm x 10m
9	Z42609	Tattoo	420	0	64	Straight Match	Non-Woven	70cm x 10m
10	Z42610	Tattoo	420	0	64	Straight Match	Non-Woven	70cm x 10m
11	Z42611	Impressioni	420	0	0	Random Match	Non-Woven	70cm x 10m
12	Z42612	Impressioni	420	0	0	Random Match	Non-Woven	70cm x 10m
13	Z42613	Impressioni	420	0	0	Random Match	Non-Woven	70cm x 10m
14	Z42614	Impressioni	420	0	0	Random Match	Non-Woven	70cm x 10m
15	Z42615	Impressioni	420	0	0	Random Match	Non-Woven	70cm x 10m
16	Z42616	Inked	420	0	4	Straight Match	Non-Woven	70cm x 10m
17	Z42617	Inked	420	0	4	Straight Match	Non-Woven	70cm x 10m
18	Z42618	Inked	420	0	4	Straight Match	Non-Woven	70cm x 10m
19	Z42619	Inked	420	0	4	Straight Match	Non-Woven	70cm x 10m
20	Z42620	Inked	420	0	4	Straight Match	Non-Woven	70cm x 10m
21	Z42621	Frames	420	0	0	Random Match	Non-Woven	70cm x 10m
22	Z42622	Frames	420	0	0	Random Match	Non-Woven	70cm x 10m
23	Z42623	Frames	420	0	0	Random Match	Non-Woven	70cm x 10m
24	Z42624	Frames	420	0	0	Random Match	Non-Woven	70cm x 10m
25	Z42625	Frames	420	0	0	Random Match	Non-Woven	70cm x 10m
26	Z42626	Lucifer	420	0	0	Random Match	Non-Woven	70cm x 10m
27	Z42627	Lucifer	420	0	0	Random Match	Non-Woven	70cm x 10m
28	Z42628	Lucifer	420	0	0	Random Match	Non-Woven	70cm x 10m
29	Z42629	Lucifer	420	0	0	Random Match	Non-Woven	70cm x 10m
30	Z42630	Lucifer	420	0	0	Random Match	Non-Woven	70cm x 10m
31	Z42631	Wings	420	0	0	Random Match	Non-Woven	70cm x 10m
32	Z42632	Wings	420	0	0	Random Match	Non-Woven	70cm x 10m
33	Z42633	Wings	420	0	0	Random Match	Non-Woven	70cm x 10m
34	Z42634	Wings	420	0	0	Random Match	Non-Woven	70cm x 10m
35	Z42635	Wings	420	0	0	Random Match	Non-Woven	70cm x 10m
36	Z42636	Dots	420	0	0	Random Match	Non-Woven	70cm x 10m
37	Z42637	Dots	420	0	0	Random Match	Non-Woven	70cm x 10m
38	Z42638	Dots	420	0	0	Random Match	Non-Woven	70cm x 10m
39	Z42639	Dots	420	0	0	Random Match	Non-Woven	70cm x 10m
40	Z42640	Dots	420	0	0	Random Match	Non-Woven	70cm x 10m
41	Z42641	Clouds	420	0	53	Straight Match	Non-Woven	70cm x 10m
42	Z42642	Clouds	420	0	53	Straight Match	Non-Woven	70cm x 10m
43	Z42643	Clouds	420	0	53	Straight Match	Non-Woven	70cm x 10m
44	Z42644	Clouds	420	0	53	Straight Match	Non-Woven	70cm x 10m
45	Z42645	Clouds	420	0	53	Straight Match	Non-Woven	70cm x 10m
46	Z42646	Arlecchino	420	0	53	Straight Match	Non-Woven	70cm x 10m
47	Z42647	Arlecchino	420	0	53	Straight Match	Non-Woven	70cm x 10m
48	Z42648	Arlecchino	420	0	53	Straight Match	Non-Woven	70cm x 10m
49	Z42649	Arlecchino	420	0	53	Straight Match	Non-Woven	70cm x 10m
50	Z42650	Arlecchino	420	0	53	Straight Match	Non-Woven	70cm x 10m



# Installation and Maintenance Guidelines

## BEFORE YOU BEGIN

Examine the material carefully to ensure that the pattern, colour, and quality are satisfactory and as ordered. Check that the quantity and dimensions match the required specifications, prior to cutting. In the event that any discrepancies are found, STOP and contact Goodrich Global before proceeding.

We recommend that the wall moisture content does not exceed 4% using a reputable moisture meter, and that active moisture infiltration, condensation, and/or accumulation - particularly in warm, humid climates - is not present. If walls show mould, mildew or visible moisture damage, or if moisture content exceeds recommendations, do not proceed with installation until the condition has been fully corrected under the direction of a qualified professional. Goodrich Global will not be responsible for any performance or quality issues if moisture problems are not addressed before or following installation.

## HANGING GUIDELINES

Wallcovering rolls are numbered consecutively and should be cut and installed in reverse sequence, starting with the highest numbered roll. All strips should be hung in sequence as they are cut from the roll, using full widths of material, whenever possible. Install the wallcovering under permanent lighting conditions to evaluate colour and texture uniformity.

When hanging non-reversible or matching patterns, measure the wall height, allowing for pattern match, add 4", and trim using a straight edge to ensure alignment across seams. Large, dominant pattern repeats require more careful planning as far as starting point, ceiling line, chair rails, door/window headers, etc. Patterns are meant to match at eye level and may run off slightly at the top and bottom of the wall. When hanging textured or random-match patterns, reverse hang alternate strips for a more uniform appearance; overlap and double cut, being careful not to score the wall. If the pattern effect is not acceptable after three strips are hung, re-hang strip #2 without reversing.

If any defect, colour variation, or unacceptable pattern effect is noticeable after three panels are cut and hung, STOP and contact Goodrich Global immediately. Goodrich Global cannot accept any claims on labour or material after more than three lengths have been installed.

## ADHESIVE APPLICATION

Apply a uniform coat of a premixed vinyl wallcovering adhesive to the back of the material using a short-napped paint roller or stiff bristle brush (a pasting machine can be used at the installer's discretion). Goodrich WA202 adhesive is recommended for heavyweight vinyl wallcovering. Fold each sheet over and allow up to 10 minutes booking time for the adhesive to penetrate the backing of the lightweight vinyl material (up to 15 minutes for heavyweight vinyl), and to avoid paste drying at the edges.

### Goodrich WA202 Wallcovering Adhesive :

- Specially formulated for all types of contract wallcoverings
- Non Hazardous, Non Toxic, Non Flammable, Non-Staining
- Solvent Free and Formaldehyde Free
- VOC is 0.45mg/kg
- Made in England



#### Complies to :

- ♥ Regulation (EC No 1907/2006)
- ♥ CLP European Regulation (EC) No 1272/2008
- ♥ BS3046/1981



## INSTALLATION

Hang the first strip to a plumb line, overlapping the ceiling and baseboard, within 12 minutes of paste application. Use a stiff bristle brush to ensure that the wallcovering makes contact with the wall. A plastic smoother can also be used on non-metallic Vinyls, providing only light pressure is applied (do not use sharp-edged tools). Smooth from the middle to the outside edges, being careful not to stretch the material, and work out all air bubbles. Trim at the ceiling and baseboard with a sharp razor blade. For matched patterns, butt the second strip to the edge of the first and smooth out firmly. When double cutting non-matching patterns, place a 2-3" wide strip behind the seam to avoid scoring the wall. Flatten seams exerting light pressure with a seam roller. Low-adhesive painter's tape can be used to keep the face of the seams clean. Before applying the next strip, trim the top and bottom as with the first panel, and proceed in the same manner around the room.

Avoid cutting narrow widths of material for placement above doors and below windows. Vertical joints should not occur less than six inches from inside or outside corners. When trimming at chair rails and ceilings, always use a broad knife rather than a straight edge. Take extra care in keeping the adhesive off the face of the wallcovering.

Remove excess adhesive immediately with a natural sponge, frequently rinsed in clear, warm water, and dry with a soft, lint free cloth. After installation, the walls and wallcovering should be monitored for potential moisture or vapour infiltration, which must be promptly eliminated.

## MAINTENANCE

Most wallcovering is easily cleaned using clear, warm water and mild soap with a natural sponge. A soft cloth or towel should only be used to tamp dry (do not rub). Stubborn stains can be removed with a laundry spot remover or rubbing alcohol. Do not use solvent-based cleaning agents, lacquer thinners, nail polish remover, pine oil, or cleaning agents containing bleach, which may cause discoloration over time.

**Note: The above is intended only as a guideline. Wallcovering installations must conform to current hanging instructions included with each shipment. The installer has final responsibility for proper installation and evaluation of jobsite conditions.**



GOODRICH SOLUTIONS

# WALLCOVERING

108 | ETEREA

# WITH GOODRICH,

Your habitat becomes

A gallery of

Your **self-expressions;**

A canvas for

Your **creativity;**

A space for

Your **soul;**

A showcase of


Your **taste for life;**

MYWALL

Stay Connected - [www.goodrichglobal.com](http://www.goodrichglobal.com) | [info@goodrichglobal.com](mailto:info@goodrichglobal.com)

 /Goodrich.Global.Singapore

 /goodrich\_global

 /GoodrichGlobal

 /GoodrichChina

 /GoodrichGlobal

 /goodrichglobal

 /GoodrichHQ

 /Goodrich\_Global

SINGAPORE [HQ] | CHINA | HONG KONG (CHINA) | INDIA | INDONESIA | MALAYSIA | MYANMAR | PHILIPPINES | THAILAND | UNITED ARAB EMIRATES | VIETNAM

Copyright © 2021 Goodrich Global. All rights reserved.